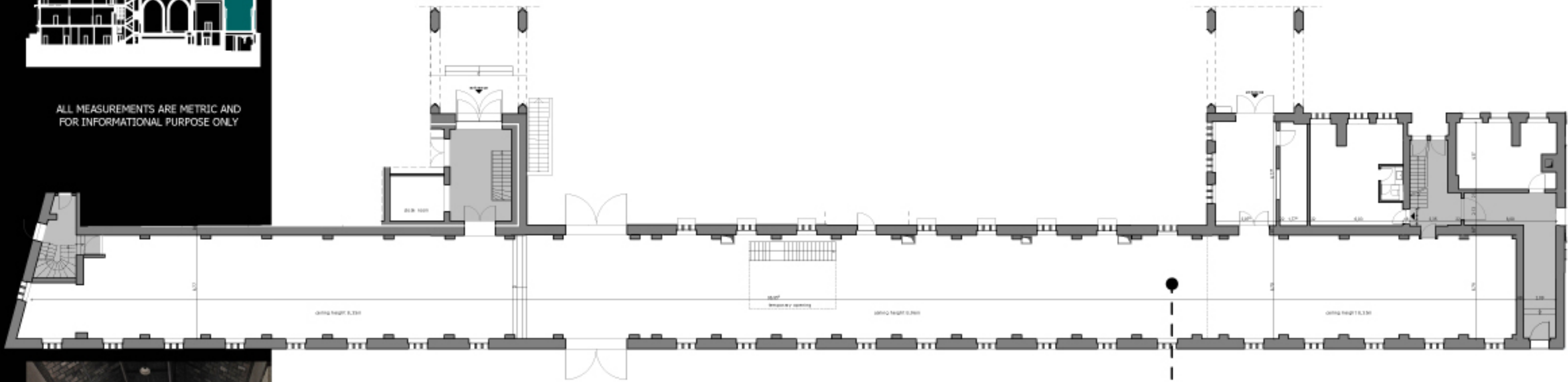




ALL MEASUREMENTS ARE METRIC AND
FOR INFORMATIONAL PURPOSE ONLY

exhibition hall: 738,24m²

LEVEL 0
HAUS 3



ALL MEASUREMENTS ARE METRIC AND
FOR INFORMATIONAL PURPOSE ONLY

MARCH 2009

